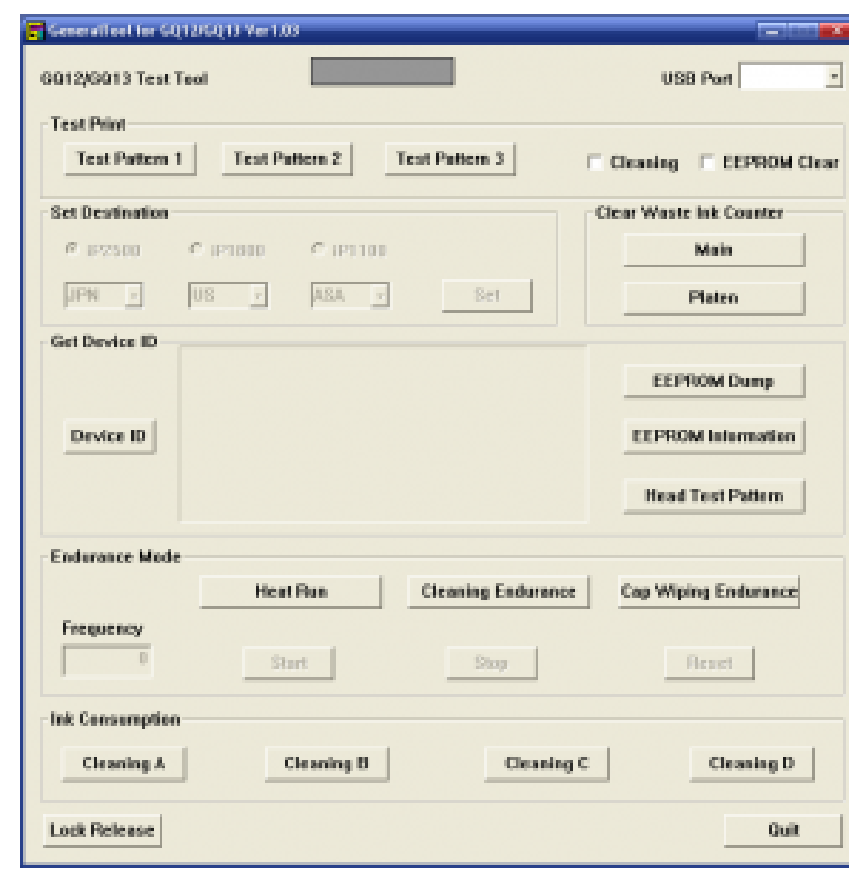


Resetter Printer Canon IP1500, IP1700, IP1300, IP1000, I255 Service Tool [Mediafire]



DOWNLOAD: <https://tinurli.com/2ipsj>

[Download](#)

Then, open door and press reset button for about 4 seconds. Step 2: Manual for Service mode Open door and hold reset button for about 4 seconds. Step 3: Manual for Service mode After all the steps above, when the ink cartridge is full, only the yellow cartridge light is on. Step 4: Manual for Service mode If you find the cartridge color is different from the previous step, please refer to the previous image. Connect a USB cable to a computer and ensure that all ink cartridges are out. Step 5: Manual for Service mode Before you start the ink cartridge replacement process, please wait until the ink cartridge reset button blinks three times. The light that appears before resetting indicates that you are in the correct place. The red light blinks when you set it to the wrong place. Step 6: Manual for Service mode Push the reset button and wait about two minutes. After two minutes, the reset process will be completed. Step 7: Manual for Service mode Push the reset button for about 4 seconds and pull the cartridge out from the machine. Step 8: Manual for Service mode Push the reset button and wait another two minutes. After two minutes, the reset process will be completed. Step 9: Manual for Service mode Connect a USB cable to a computer and ensure that all ink cartridges are out. Step 10: Manual for Service mode Press the reset button for about 4 seconds and pull the cartridge out from the machine. Step 11: Manual for Service mode Return the cartridge to the original place. Repeat the process. Press the reset button for about 4 seconds and pull the cartridge out from the machine. Step 12: Manual for Service mode Press the reset button and wait about two minutes. After two minutes, the reset process will be completed. Step 13: Manual for Service mode Push the reset button for about 4 seconds and pull the cartridge out from the machine. Step 14: Manual for Service mode Return the cartridge to the original place. Repeat the process. Step 15: Manual for Service mode Turn off the power switch. Shovels and other such shovel like devices are commonly used to remove dirt, snow, and other material from sidewalks, driveways, parking lots, lawns, and other such surfaces. Shovels may be connected to a variety of devices including a handle or other such attachment mechanism. Such attachments may allow the shovel to be connected to a work vehicle or the like. Shovels may be held by hand or attached to the vehicle using an attachment mechanism. A variety of attachment mechanisms are used to attach 82157476af

Related links:

- [evermotion archinteriors vol 27 download torrent](#)
- [Adobe Photoshop CS2 Crack Rar Files](#)
- [Policewala Gunda English Subtitle Full Movie Download](#)